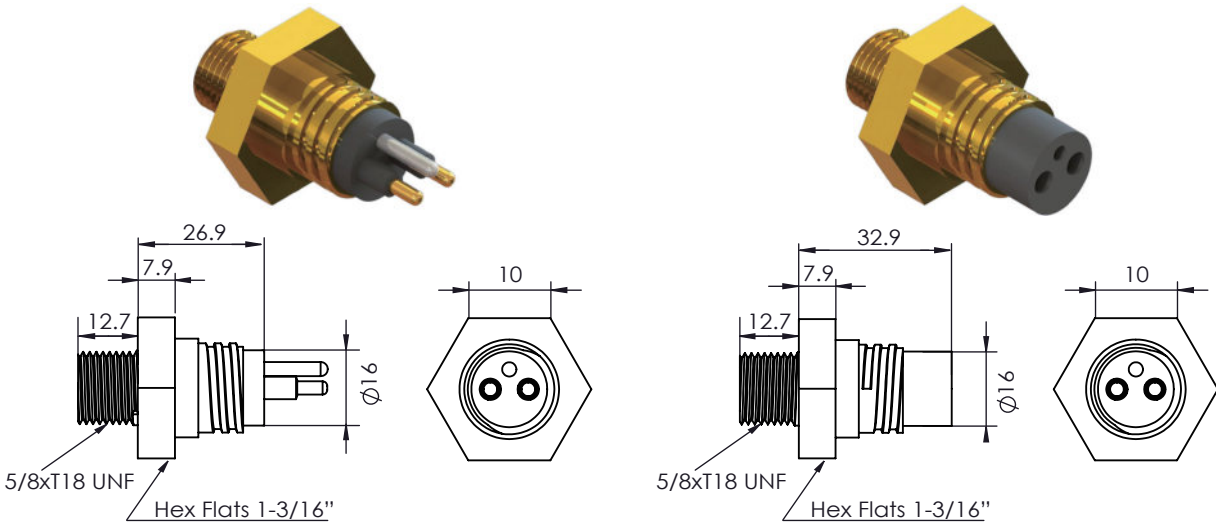


Metal Shell 1500

Mini Hex Connector (MCHX)

Contact: 2, 3, 4, 5, 6, 8



*Dimensions in mm
Thread in inches

Operation Specification

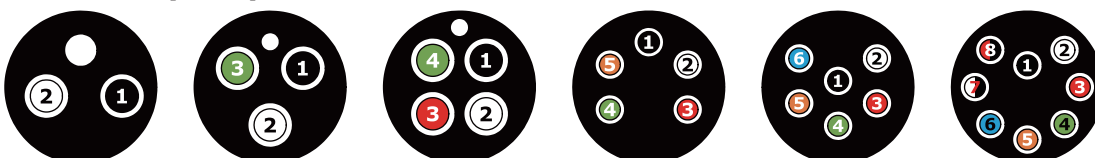
Max. voltage	300 VDC
Current rating @contact	2,3,4 contacts 10A 5,6,8 contacts 5A
Max. current @connector	20A
Insulation resistance	>200 Mohm
Contact resistance	<0.01 ohm
Wet mating	>500
Depth rating	600 bar
Temperature rating	-40 to 60°C

Material Specification

Connector body	Chloroprene rubber
Bulkhead body	Brass, stainless steel 316, anodized aluminum, titanium
Contact	Gold plated brass
Socket	Beryllium copper
Location pin	Stainless steel 316
Bulkhead leads	2,3,4 contacts AWG 18 PTFE, 30cm (AWG 20 PTFE optional) 5,6,8 contacts AWG 20 PTFE, 30cm (AWG 22 PTFE optional)
O-rings	NBR 2-116

* compatible with Subconn

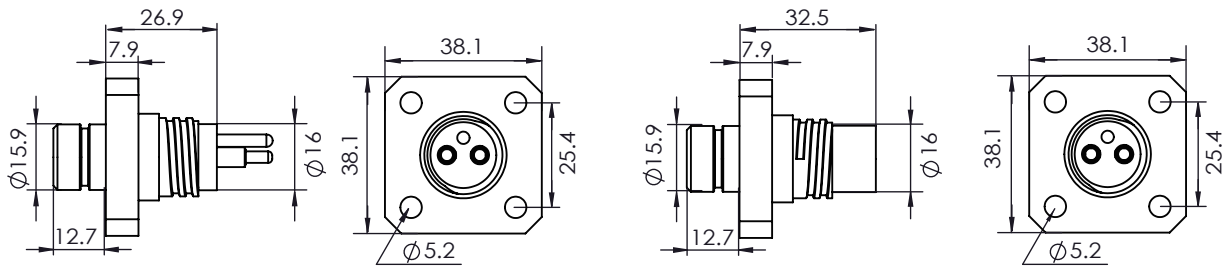
Face View (Male)



Metal Shell 1500

Mini Flange Connector (MCFG)

Contact: 2, 3, 4, 5, 6, 8



*Dimensions in mm
Thread in inches

Operation Specification

Max. voltage	300 VDC
Current rating @contact	2,3,4 contacts 10A 5,6,8 contacts 5A
Max. current @connector	20A
Insulation resistance	>200 Mohm
Contact resistance	<0.01 ohm
Wet mating	>500
Depth rating	600 bar
Temperature rating	-40 to 60°C

Material Specification

Connector body	Chloroprene rubber
Bulkhead body	Brass, stainless steel 316, anodized aluminum, titanium
Contact	Gold plated brass
Socket	Beryllium copper
Location pin	Stainless steel 316
Bulkhead leads	2,3,4 contacts AWG 18 PTFE, 30cm (AWG 20 PTFE optional) 5,6,8 contacts AWG 20 PTFE, 30cm (AWG 22 PTFE optional)
O-rings	NBR 2-116; S-14

* compatible with Subconn

Face View (Male)

