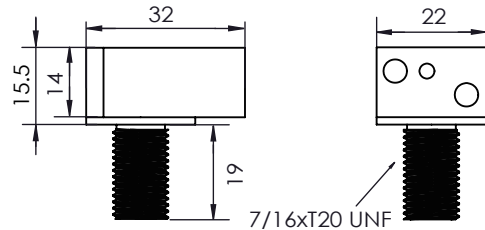
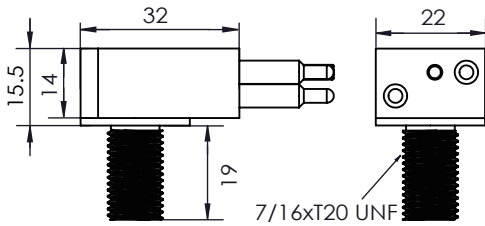
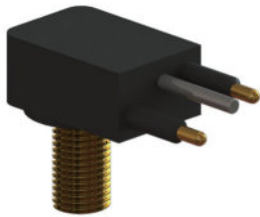


# Low Profile Connector

## Bulkhead Connector (LPBH)

Contact: 2



\*Dimensions in mm  
Thread in inches

### Operation Specification

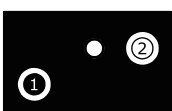
Max. voltage	600 VDC
Current rating @contact	10A
Max. current @connector	20A
Insulation resistance	>200 Mohm
Contact resistance	<0.01 ohm
Wet mating	>500
Depth rating	600 bar (300 bar for peek)
Temperature rating	-40 to 60°C

### Material Specification

Connector body	Chloroprene Rubber
Bulkhead body	Brass, stainless steel 316, anodized aluminum, titanium or peek
Contact	Phosphor Bronze
Socket	Beryllium Copper
Location pin	Stainless steel 316
Bulkhead leads	AWG 18 PTFE, 30cm
O-rings	NBR 2-014

\* compatible with Subconn

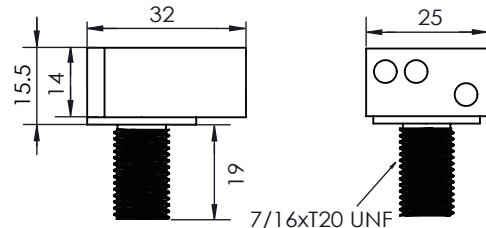
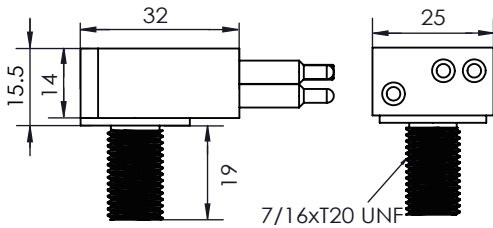
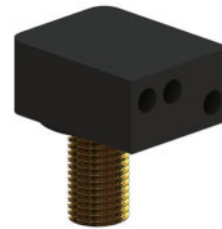
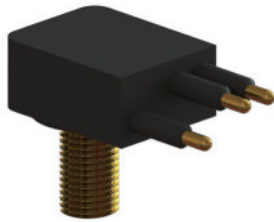
### Face View (Male)



# Low Profile Connector

## Bulkhead Connector (LPBH)

Contact: 3, 4, 5



\*Dimensions in mm  
Thread in inches

### Operation Specification

Max. voltage	600 VDC
Current rating @contact	10A
Max. current @connector	40A
Insulation resistance	>200 Mohm
Contact resistance	<0.01 ohm
Wet mating	>500
Depth rating	600 bar (300 bar for peek)
Temperature rating	-40 to 60°C

### Material Specification

Connector body	Chloroprene Rubber
Bulkhead body	Brass, stainless steel 316, anodized aluminum, titanium or peek
Contact	Phosphor Bronze
Socket	Beryllium Copper
Location pin	NA
Bulkhead leads	AWG 18 PTFE, 30cm
O-rings	NBR 2-014

\* compatible with Subconn

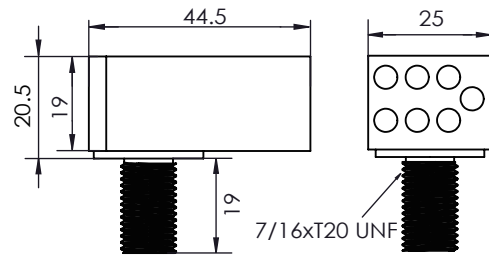
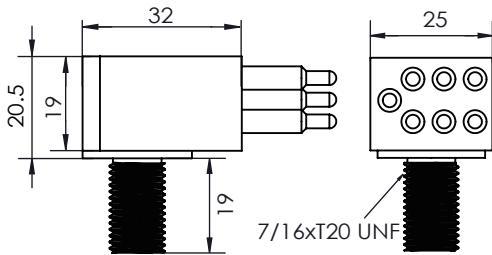
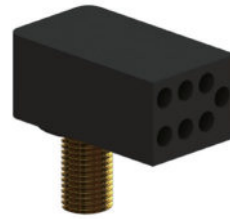
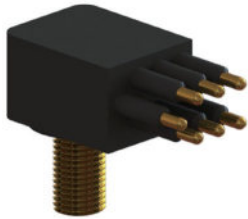
### Face View (Male)



# Low Profile Connector

## Bulkhead Connector (LPBH)

Contact: 7



\*Dimensions in mm  
Thread in inches

### Operation Specification

Max. voltage	600 VDC
Current rating @contact	10A
Max. current @connector	40A
Insulation resistance	>200 Mohm
Contact resistance	<0.01 ohm
Wet mating	>500
Depth rating	600 bar (300 bar for peek)
Temperature rating	-40 to 60°C

### Material Specification

Connector body	Chloroprene Rubber
Bulkhead body	Brass, stainless steel 316, anodized aluminum, titanium or peek
Contact	Phosphor Bronze
Socket	Beryllium Copper
Location pin	NA
Bulkhead leads	AWG 18 PTFE, 30cm
O-rings	NBR 2-014

\* compatible with Subconn

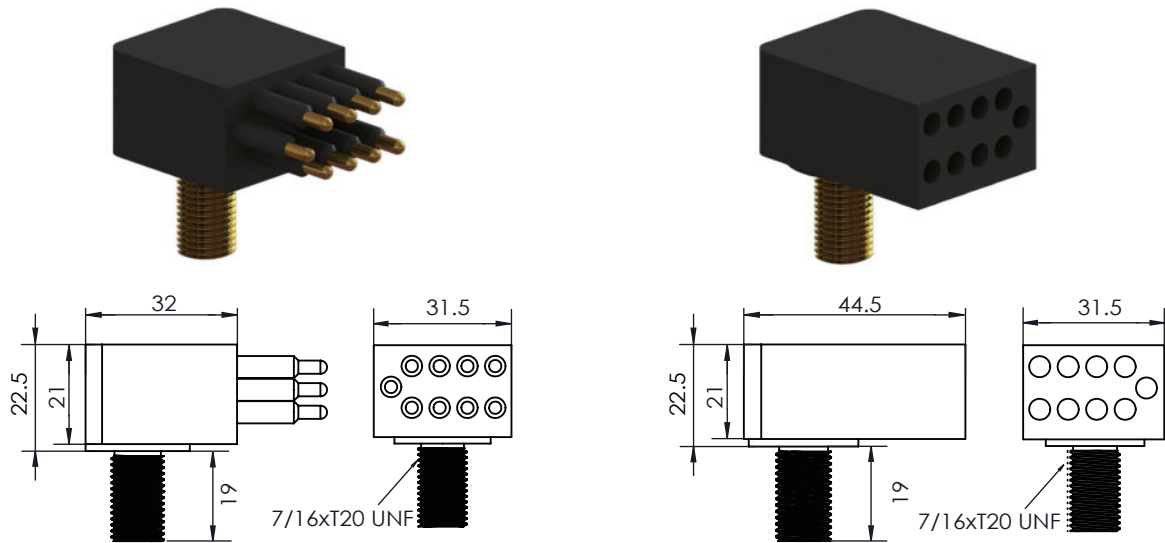
### Face View (Male)



# Low Profile Connector

## Bulkhead Connector (LPBH)

Contact: 9



\*Dimensions in mm  
Thread in inches

### Operation Specification

Max. voltage	600 VDC
Current rating @contact	10A
Max. current @connector	40A
Insulation resistance	>200 Mohm
Contact resistance	<0.01 ohm
Wet mating	>500
Depth rating	600 bar (300 bar for peek)
Temperature rating	-40 to 60°C

### Material Specification

Connector body	Chloroprene Rubber
Bulkhead body	Brass, stainless steel 316, anodized aluminum, titanium or peek
Contact	Phosphor Bronze
Socket	Beryllium Copper
Location pin	Stainless steel 316
Bulkhead leads	AWG 18 PTFE, 30cm
O-rings	NBR 2-014

\* compatible with Subconn

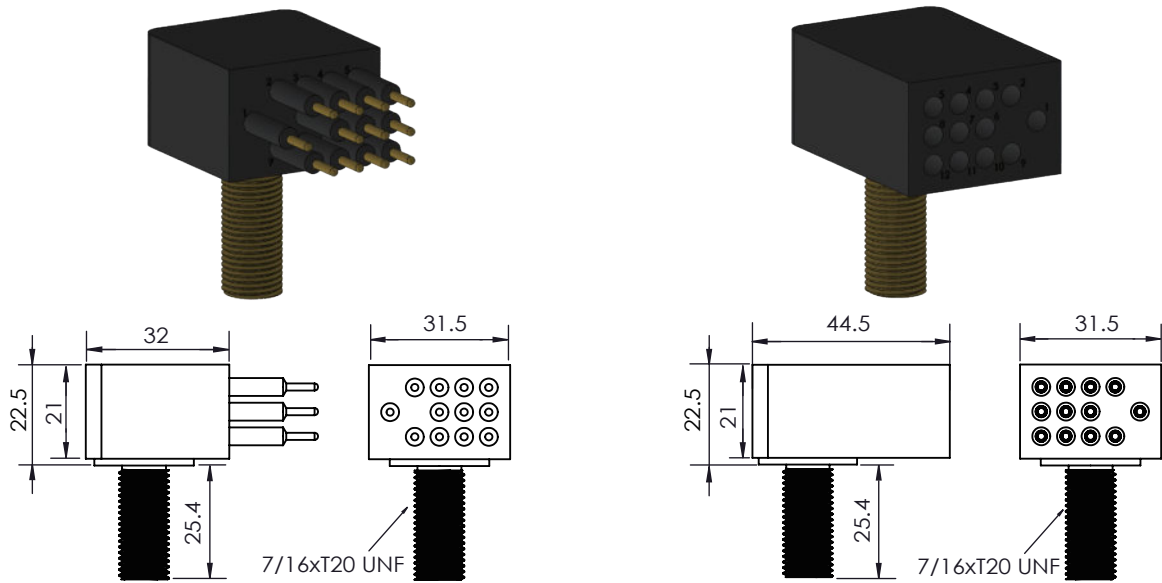
### Face View (Male)



# Low Profile Connector

## Bulkhead Connector (LPBH)

Contact: 12



\*Dimensions in mm  
Thread in inches

### Operation Specification

Max. voltage	600 VDC
Current rating @contact	10A
Max. current @connector	40A
Insulation resistance	>200 Mohm
Contact resistance	<0.01 ohm
Wet mating	>500
Depth rating	600 bar (300 bar for peek)
Temperature rating	-40 to 60°C

### Material Specification

Connector body	Chloroprene Rubber
Bulkhead body	Brass, stainless steel 316, anodized aluminum, titanium or peek
Contact	Phosphor Bronze
Socket	Beryllium Copper
Location pin	Stainless steel 316
Bulkhead leads	AWG 18 PTFE, 30cm
O-rings	NBR 2-014

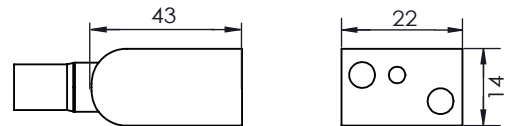
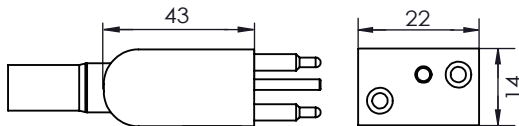
### Face View (Male)



# Low Profile Connector

## Inline Connector (LPIL)

Contact: 2



\*Dimensions in mm  
Thread in inches

### Operation Specification

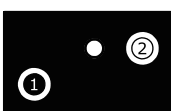
Max. voltage	600 VDC
Current rating @contact	10A
Max. current @connector	20A
Insulation resistance	>200 Mohm
Contact resistance	<0.01 ohm
Wet mating	>500
Depth rating	600 bar
Temperature rating	-40 to 60°C

### Material Specification

Connector body	Chloroprene rubber
Contact	Gold plated brass
Socket	Beryllium copper
Location pin	Stainless steel 316
Inline cable	AWG 16 PTFE, 60cm
O-rings	NA

\* compatible with Subconn

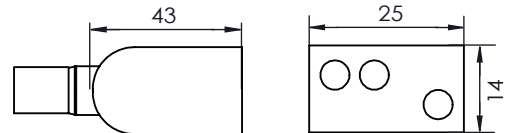
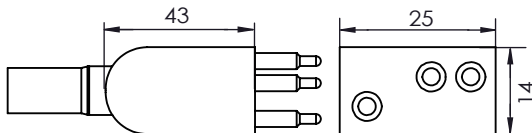
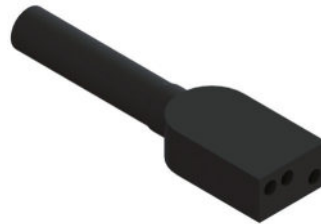
### Face View (Male)



# Low Profile Connector

## Inline Connector (LPIL)

Contact: 3, 4, 5



\*Dimensions in mm  
Thread in inches

### Operation Specification

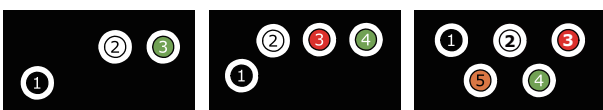
Max. voltage	600 VDC
Current rating @contact	10A
Max. current @connector	40A
Insulation resistance	>200 Mohm
Contact resistance	<0.01 ohm
Wet mating	>500
Depth rating	600 bar
Temperature rating	-40 to 60°C

### Material Specification

Connector body	Chloroprene rubber
Contact	Gold plated brass
Socket	Beryllium copper
Location pin	NA
Inline cable	3,4 contacts AWG 16 Neoprene, 60cm 5 contacts AWG 18 Neoprene, 60cm
O-rings	NA

\* compatible with Subconn

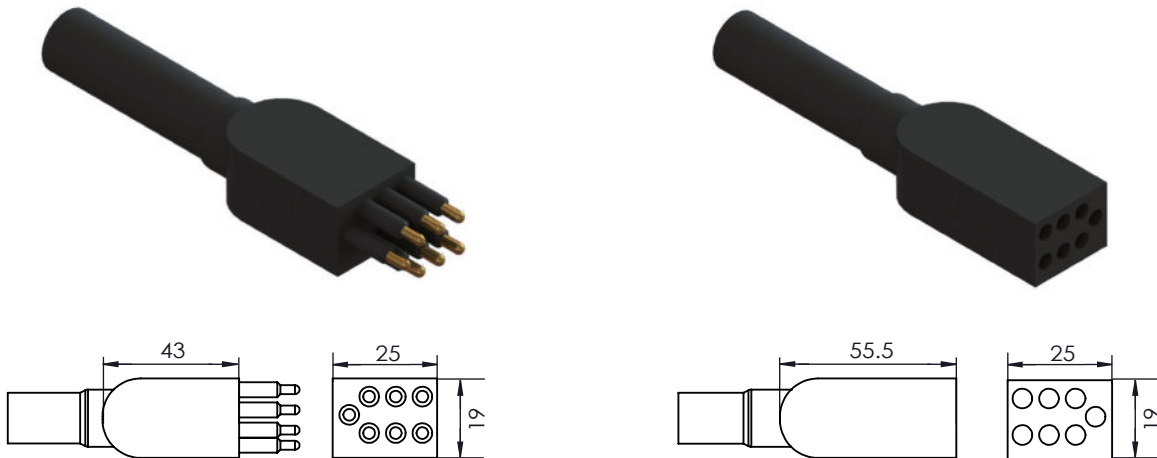
### Face View (Male)



# Low Profile Connector

## Inline Connector (LPIL)

Contact: 7



\*Dimensions in mm  
Thread in inches

### Operation Specification

Max. voltage	600 VDC
Current rating @contact	10A
Max. current @connector	40A
Insulation resistance	>200 Mohm
Contact resistance	<0.01 ohm
Wet mating	>500
Depth rating	600 bar
Temperature rating	-40 to 60°C

### Material Specification

Connector body	Chloroprene rubber
Contact	Gold plated brass
Socket	Beryllium copper
Location pin	NA
Inline cable	AWG 16 Neoprene, 60cm
O-rings	NA

\* compatible with Subconn

### Face View (Male)

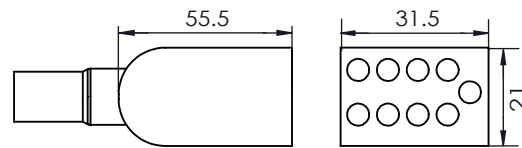
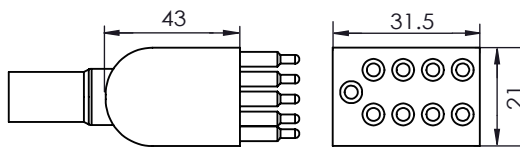
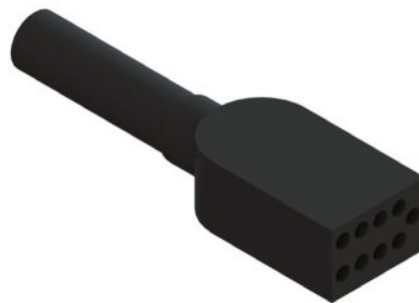
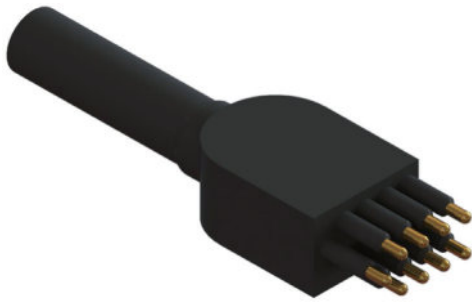




# Low Profile Connector

## Inline Connector (LPIL)

Contact: 9



\*Dimensions in mm  
Thread in inches

### Operation Specification

Max. voltage	600 VDC
Current rating @contact	10A
Max. current @connector	40A
Insulation resistance	>200 Mohm
Contact resistance	<0.01 ohm
Wet mating	>500
Depth rating	600 bar
Temperature rating	-40 to 60°C

### Material Specification

Connector body	Chloroprene rubber
Contact	Gold plated brass
Socket	Beryllium copper
Location pin	NA
Inline cable	AWG 16 Neoprene, 60cm
O-rings	NA

\* compatible with Subconn

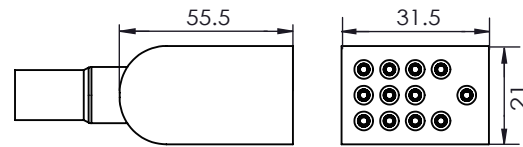
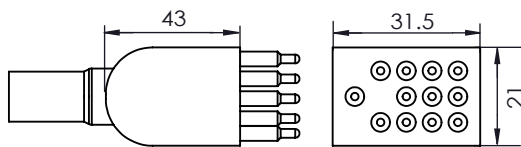
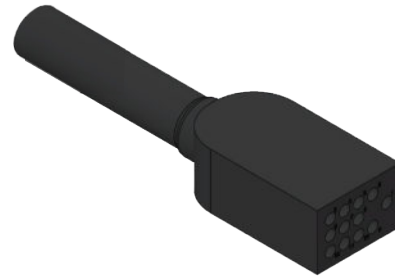
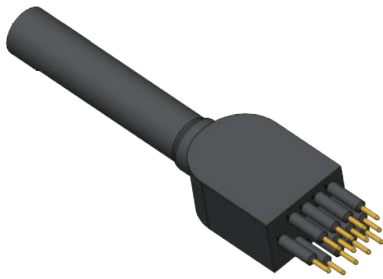
### Face View (Male)



# Low Profile Connector

## Inline Connector (LPIL)

Contact: 12



\*Dimensions in mm  
Thread in inches

### Operation Specification

Max. voltage	600 VDC
Current rating @contact	10A
Max. current @connector	40A
Insulation resistance	>200 Mohm
Contact resistance	<0.01 ohm
Wet mating	>500
Depth rating	600 bar
Temperature rating	-40 to 60°C

### Material Specification

Connector body	Chloroprene rubber
Contact	Gold plated brass
Socket	Beryllium copper
Location pin	NA
Inline cable	AWG 18 Neoprene, 60cm
O-rings	NA

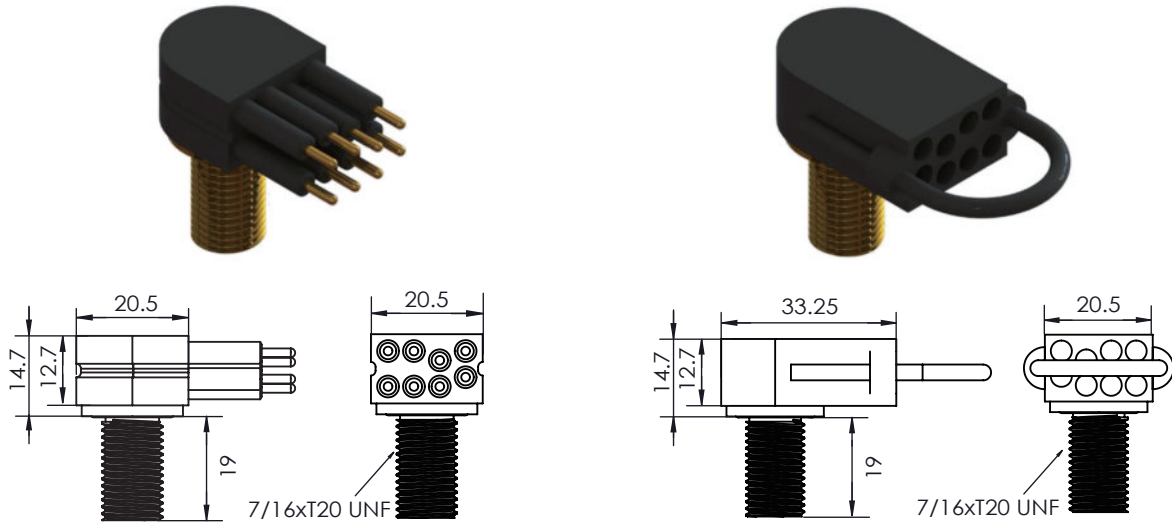
### Face View (Male)



# Low Profile Connector

## Mini Bulkhead Connector (LPMCBH)

Contact: 2, 3, 4, 5, 6, 7, 8



\*Dimensions in mm  
Thread in inches

### Operation Specification

Max. voltage	300 VDC
Current rating @contact	5A
Max. current @connector	20A
Insulation resistance	>200 Mohm
Contact resistance	<0.01 ohm
Wet mating	>500
Depth rating	600 bar (300 bar for peek)
Temperature rating	-40 to 60°C

### Material Specification

Connector body	Chloroprene rubber
Bulkhead body	Brass, stainless steel 316, anodized aluminum, titanium or peek
Contact	Gold plated brass
Socket	Beryllium copper
Location pin	Stainless steel 316
Bulkhead leads	AWG 20 PTFE, 30cm
O-rings	NBR 2-014

\* compatible with Teledyne Impulse

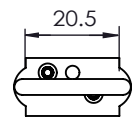
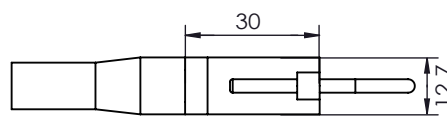
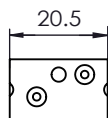
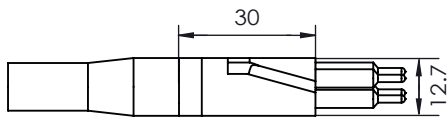
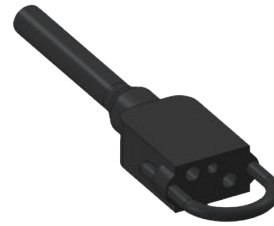
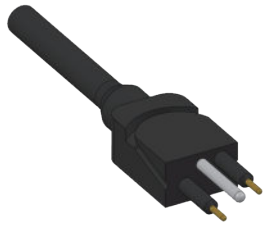
### Face View (Male)



# Low Profile Connector

## Mini Inline Connector (LPMCIL)

Contact: 2, 3, 4, 5, 6, 7, 8



\*Dimensions in mm  
Thread in inches

### Operation Specification

Max. voltage	300 VDC
Current rating @contact	5A
Max. current @connector	20A
Insulation resistance	>200 Mohm
Contact resistance	<0.01 ohm
Wet mating	>500
Depth rating	600 bar
Temperature rating	-40 to 60°C

### Material Specification

Connector body	Chloroprene rubber
Contact	Gold plated brass
Socket	Beryllium copper
Location pin	Stainless steel 316
Inline cable	AWG 20 EPDM, 60cm
O-rings	NA

\* compatible with Teledyne Impulse

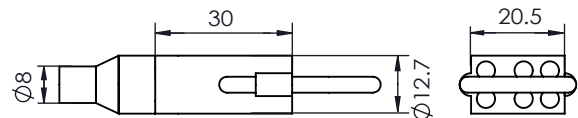
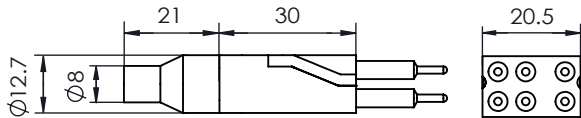
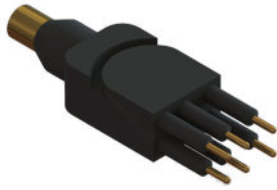
### Face View (Male)



# Low Profile Connector

## Mini Overmold Connector (LPMCOM)

Contact: 2, 3, 4, 5, 6



\*Dimensions in mm  
Thread in inches

### Operation Specification

Max. voltage	300 VDC
Current rating @contact	5A
Max. current @connector	20A
Insulation resistance	>200 Mohm
Contact resistance	<0.01 ohm
Wet mating	>500
Depth rating	600 bar
Temperature rating	-40 to 60°C

### Material Specification

Connector body	Chloroprene rubber
Bulkhead body	Brass
Contact	Gold plated brass
Socket	Beryllium copper
Location pin	Stainless steel 316
Bulkhead leads	AWG 20 PTFE, 10cm
O-rings	NA

\* compatible with Teledyne Impulse

### Face View (Male)

